



World Edition





Britain By Rail

Enjoy scenic routes through England's rolling hills, Scottish Highlands, Ireland's coastal views and Welsh National Parks.

BritRail Pass

enjoy unlimited train trips on travel days

BritRail Pass: travel throughout England, Scotland and Wales
Flexi Pass: 3, 4, 8, or 15 days within 2 months / Consecutive Pass: 3, 4, 8, 15, 22 days or 1 month

BritRail England Pass: travel throughout England
Flexi Pass: 3, 4, 8, or 15 days within 2 months / Consecutive Pass: 3, 4, 8, 15, 22 days or 1 month

BritRail London Plus Pass: travel throughout the South East region of England
Flexi Pass: 2 or 4 days within 8 days or 7 days within 15 days

BritRail Pass + Ireland: travel throughout England, Scotland, Wales and Ireland
Flexi Pass: 5 or 10 days within 1 month

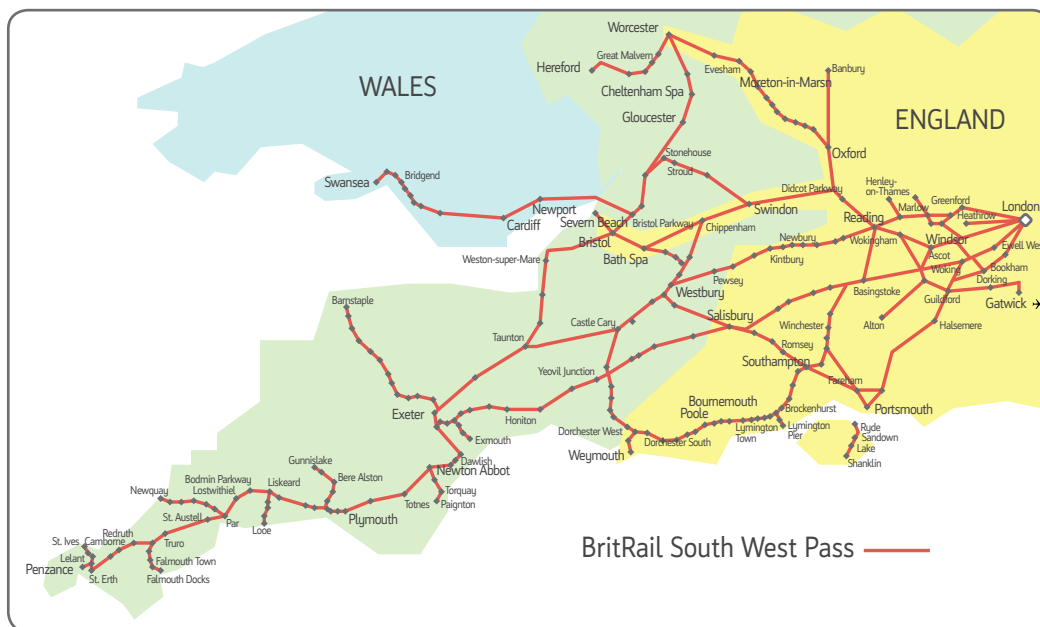
BritRail Freedom of Scotland Pass: Travel throughout Scotland
Flexi Pass: 4 days within 8 days or 8 days within 15 days

BritRail Central Scotland Pass: travel throughout the Central region of Scotland
Flexi Pass: 3 days within 7 days

BritRail South West Pass: travel throughout the South West region of England
Flexi Pass: 3, 4, 8, or 15 days within 2 months / Consecutive Pass: 3, 4, 8, 15, 22 days or 1 month

New! BritRail Scottish Highlands Pass: travel on trains, ferries and a selection of coach services throughout the West and North Highlands
Flexi Pass: 4 days in 8 days

New! BritRail customers can now benefit from 100+ discount offers at attractions throughout the UK. Visit www.acprail.com/britrail-bonus-offers for details.



BritRail Discounts on select passes save up to...

25% when traveling with a UK friend or relative

50% off the 3rd to 9th passenger, perfect for group travel

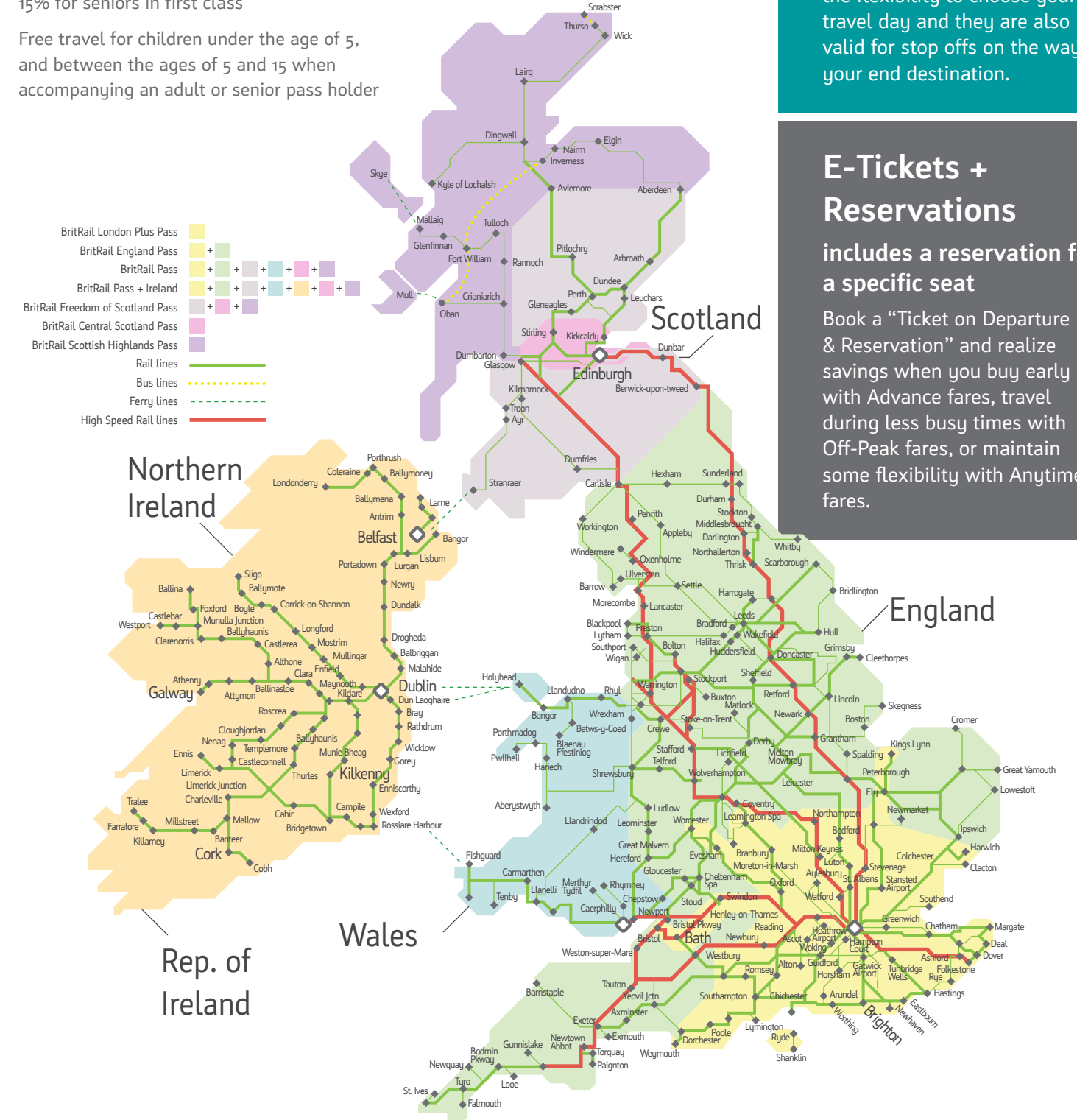
20% during the low season in January, February, November & December

20% for youth between the ages of 16 and 25

50% for youth who have a valid Eurail Pass

15% for seniors in first class

Free travel for children under the age of 5, and between the ages of 5 and 15 when accompanying an adult or senior pass holder



BritRail Train Tickets

an open ticket for the route of your choice

BritRail's point to point tickets aren't restricted to a specific day and time so you still have the flexibility to choose your travel day and they are also valid for stop offs on the way to your end destination.

E-Tickets + Reservations

includes a reservation for a specific seat

Book a "Ticket on Departure & Reservation" and realize savings when you buy early with Advance fares, travel during less busy times with Off-Peak fares, or maintain some flexibility with Anytime fares.



Eurail Discounts

on select passes save up to...

15% for groups of 2 to 5 passengers traveling together with a Saver Pass

35% for youth between the ages of 12 to 25 in second class

50% for children between the ages of 4 to 11

Free travel for infants under the age of 4, when accompanying an adult pass holder

Reservations for Pass Holders make a seat reservation

Pass holders can make seat reservations per person, per train for a nominal fee, which are required for most international long-distance trains, various domestic high-speed trains and night trains.

Sleepers

take a night train

Pass holders can purchase a supplement for travel aboard a sleeper train which is a great way to cover a large distance without wasting a day on travel, and saving the cost of one nights' hotel stay.

Europe By Rail

Eurail Passes

countries are well connected making for seamless travel

Eurail Global Pass: travel throughout 24 countries

Flexi Pass: 10 or 15 days within 2 months / Consecutive Pass: 15 or 21 days, or 1, 2 or 3 months

Valid in: Austria, Belgium, Bulgaria, Croatia, Czech Republic, Denmark, Finland, France, Germany, Greece, Hungary, Ireland, Italy, Luxembourg, Netherlands, Norway, Portugal, Romania, Slovakia, Slovenia, Spain, Sweden, Switzerland and Turkey

Eurail Select Pass: travel throughout 3, 4 or 5 bordering countries

Flexi Pass: 5, 6, 8 or 10 days within 2 months and 15 days within 2 months for the 5 country pass

Choose from: Austria, Belgium, Bulgaria, Croatia, Czech Republic, Denmark, Finland, Germany, Greece, Hungary, Ireland, Italy, Luxembourg, Montenegro, Netherlands, Norway, Portugal, Romania, Serbia, Slovakia, Slovenia, Spain, Sweden, Switzerland and Turkey

Eurail Regional Pass: travel throughout 2 adjoining countries

Flexi Pass: 4, 5, 6, 7, 8, 9 or 10 days within 2 months; validities differ depending on the pass

Eurail National Pass: travel throughout one country of your choice

Flexi Pass: 3, 4, 5, 6, 7, 8, 9 or 10 days within 1 or 2 months; validities differ depending on the pass

New! Eurail Attica Group Pass: travel by ferry between Greece and Italy

Flexi Pass: 10 travel days within 1 month

Europe Rail Passes

more options for travel in a specific country or region

European East Pass: travel throughout the Czech Republic, Slovakia, Austria and Hungary

Flexi Pass: 5, 6, 7, 8, 9 or 10 days within 1 month

Balkan Pass: travel throughout Bulgaria, Greece, Macedonia, Montenegro, Romania, Serbia, Turkey, Bosnia & Herzegovina

Flexi Pass: 5, 10 or 15 days within 1 month

New! Central Europe Triangle Pass: travel between Vienna, Budapest and Prague, or between Vienna, Prague and Salzburg. Start in the city of your choice and travel in any direction

Flexi Pass: 3 one-way rail journeys within 1 month

New! Jungfrau Tickets and Passes: travel throughout Switzerland's Jungfrau region and reach its peak some 3454 meters above sea level, while enjoying sensational panoramic views en route

Consecutive Pass: 3 or 6 days

Germany By Rail

German Rail Pass: travel throughout Germany

Flexi Pass: 4, 5, 6, 7 and 10 days within 1 month

German Rail Pass Extension: travel beyond Germany

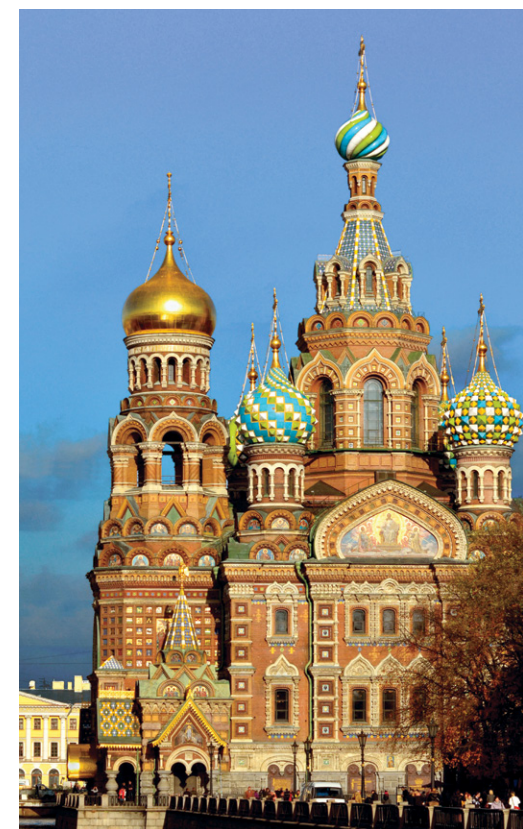
German Rail Pass holders can extend their travels to Brussels, Prague, Krakow, Venice and select cities in Austria and Italy.



New! Russia by Rail

Explore Russia with domestic train E-tickets

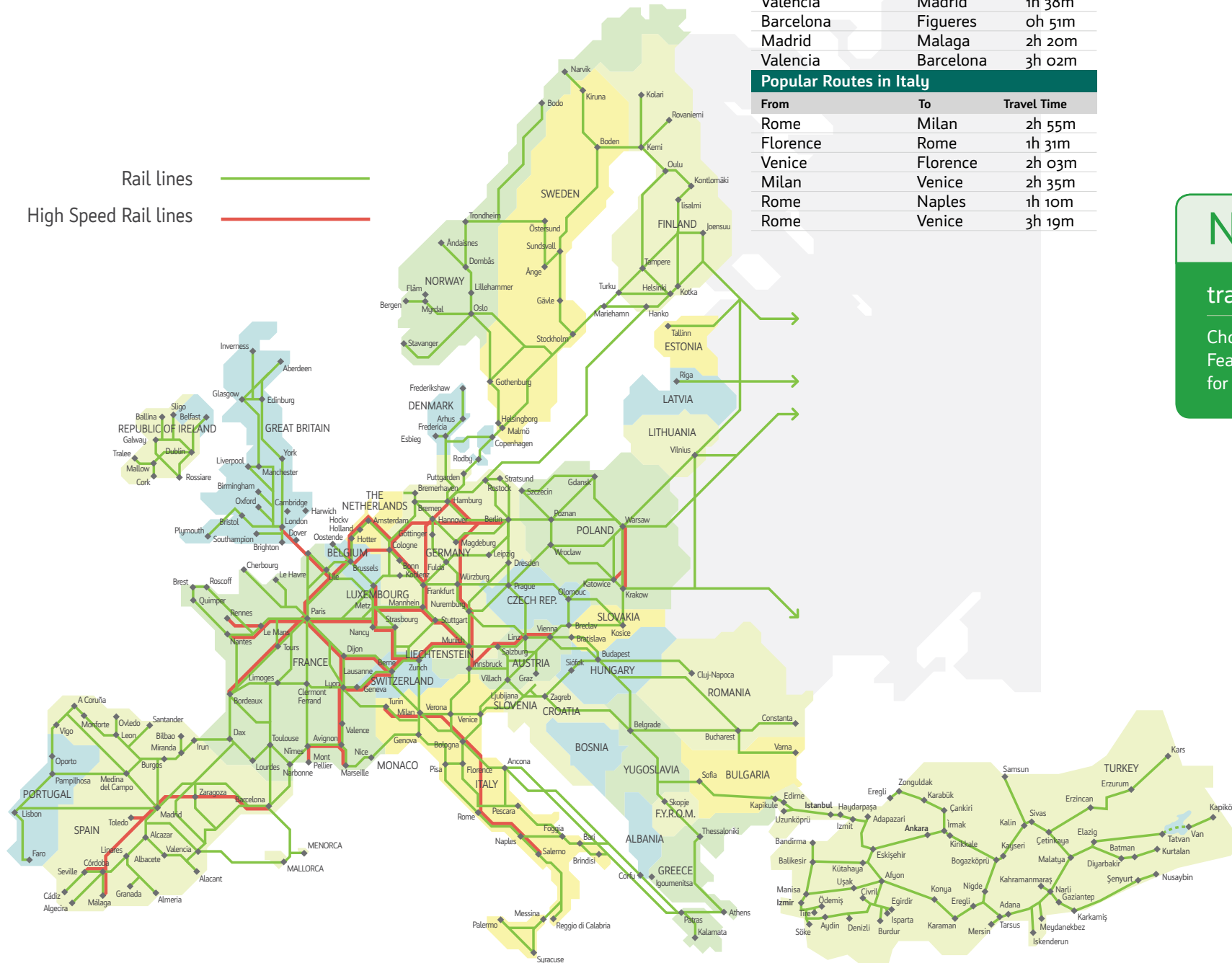
Travel by train between popular Russian destinations such as: Moscow, St Petersburg, Kazan, Volgograd, Nizhni Novgorod and Yekaterinburg. As Russia spans 3 continents and shares borders with 14 neighbouring countries, travelers will be sure to appreciate its cultural diversity and changing landscapes.



Europe By Rail

Hop aboard your choice of train and benefit from all the modern conveniences of train travel in Europe, with frequent connections to both domestic and international destinations. Select from a great variety of passes, point to point tickets, seat reservations and sleepers.

Rail lines ———
High Speed Rail lines ———



Popular Routes in Europe

From	To	Travel Time
Amsterdam	Brussels	1h 46m
Berlin	Prague	4h 40m
Frankfurt	Munich	3h 18m
Frankfurt	Amsterdam	3h 51m
Milan	Zurich	3h 41m
Paris	Marseille	3h 05m
Prague	Vienna	4h 05m
St. Petersburg	Helsinki	1h 36m
Stockholm	Copenhagen	4h 43m
Vienna	Budapest	2h 46m
Vienna	Munich	3h 57m

Popular Routes in Spain

From	To	Travel Time
Madrid	Barcelona	2h 30m
Seville	Madrid	2h 20m
Valencia	Madrid	1h 38m
Barcelona	Figueres	0h 51m
Madrid	Malaga	2h 20m
Valencia	Barcelona	3h 02m

Popular Routes in Italy

From	To	Travel Time
Rome	Milan	2h 55m
Florence	Rome	1h 31m
Venice	Florence	2h 03m
Milan	Venice	2h 35m
Rome	Naples	1h 10m
Rome	Venice	3h 19m

Spain by Rail



New! Renfe Spain Pass

travel throughout Spain

Choose from: 4, 6, 8, 10 or 12 rail journeys within 1 month
Features: conveniently offered as an e-ticket, book seat reservations free of charge, valid for travel on all trains including AVE, Long and Middle Distance.

Renfe E-tickets

Available for domestic routes in Spain.

Travel between Madrid and Barcelona in just 2 hours and 30 minutes, aboard Spain's modern high speed AVE trains which offer great comfort and service standards. You can also choose from Spain's numerous other domestic routes, to the likes of Seville, Málaga, Valencia and beyond.



Italy by Rail



Trenitalia E-Tickets

Available for domestic routes in Italy.

Train travel in Italy is the best way to get around and see all those city centers that can't be missed, including Rome, Naples, Milan, Venice, Florence and many more. Take the route Milan – Rome – Milan for example: with 68 daily connections, it's clear why Italy is known for its numerous daily departures and impressive high speed services.



Scandinavia

Eurail Passes

Scandinavia's scenery is best enjoyed by train

Eurail Scandinavia Pass: travel throughout Sweden, Norway, Finland and Denmark
Flexi Pass: 4, 5, 6, 8 or 10 days within 2 months

Eurail Norway Pass: travel throughout Norway
Flexi Pass: 3, 4, 5, 6 or 8 days within 1 month

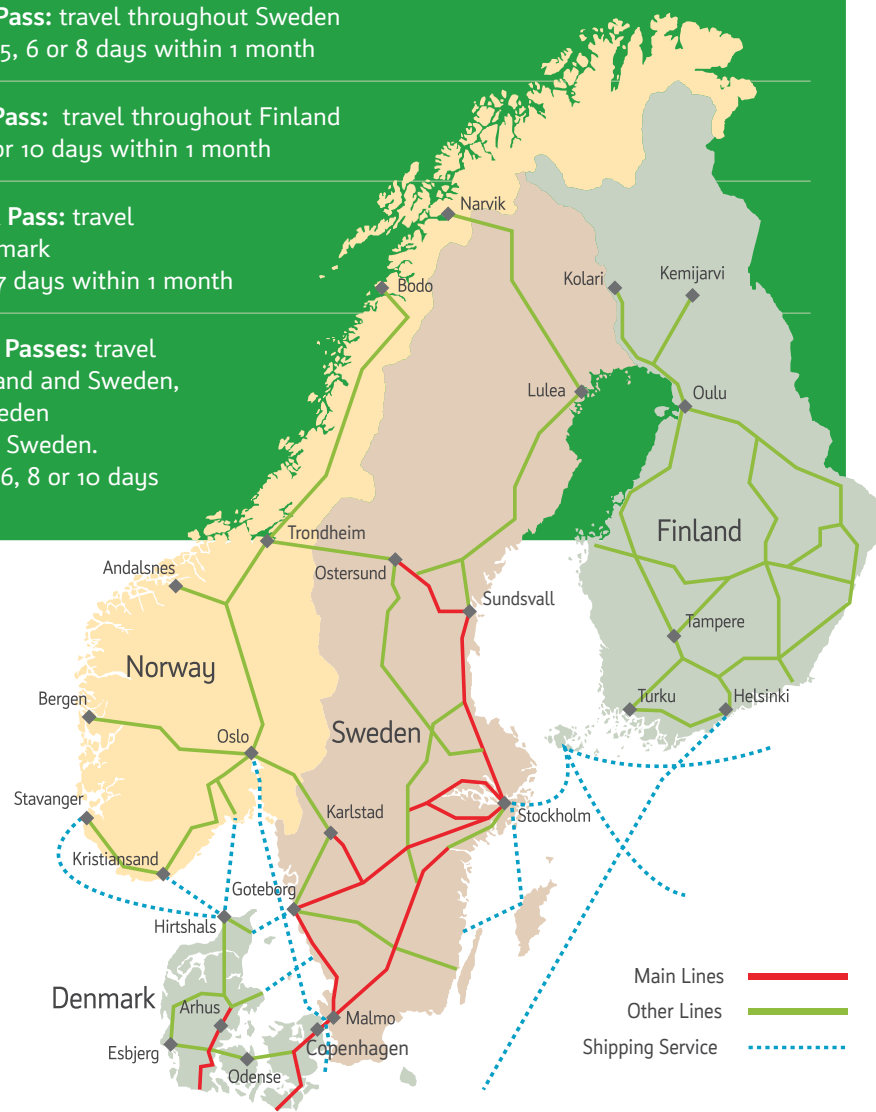
Eurail Sweden Pass: travel throughout Sweden
Flexi Pass: 3, 4, 5, 6 or 8 days within 1 month

Eurail Finland Pass: travel throughout Finland
Flexi Pass: 3, 5 or 10 days within 1 month

Eurail Denmark Pass: travel throughout Denmark
Flexi Pass: 3 or 7 days within 1 month

Eurail Regional Passes: travel throughout Finland and Sweden, Norway and Sweden or Denmark and Sweden.
Flexi Pass: 4, 5, 6, 8 or 10 days within 2 months

Explore Scandinavia's natural wonders including Norway's fjords, Sweden's green countryside, Denmark's white-sandy seashores, and Finland's fabulous Lakeland. Scandinavia also boasts numerous vibrant cities with great rail connections, such as Stockholm, Helsinki, Copenhagen, Oslo and beyond.



Train Tickets to Russia

from Helsinki to St. Petersburg

Extend your travels from Finland into Russia! The journey takes approximately 3 and a half hours on the Allegro high speed train.



Scenic Norway

Norway in a Nutshell

lovely scenic train routes and fjord cruises

Experience the scenic Bergen Railway, the breathtaking Flåm Railway, the Aurlandsfjord, Sognefjord, Hardangerfjord and Naeroyfjord, stunning waterfalls, historic towns and the steep bends up Stalheimskleiva mountainside.

Norway in a nutshell
Sognefjord in a nutshell
Hardanger in a nutshell



Rauma Line

journey between Dombås and Åndalsnes train stations

The Rauma Line takes you through picturesque mountains, over bridges, through tunnels and past the tallest rock-face in Europe; the Trollveggen.

Flåm Railway

journey between Flåm and Myrdal train stations

The Flåm Railway is one of the world's steepest railway lines and provides some of Norway's wildest and most magnificent scenery. Enjoy an incredible train journey from the mountain station at Myrdal on the Bergen Railway, down to Flåm station nestled in the innermost corner of the Aurlandfjord.

Mini Tours

Passholders traveling with a Eurail Pass that is valid in Norway can purchase a mini tour for Norway in a Nutshell and Sognefjord in a Nutshell, valid on the route Myrdal-Flåm-Gudvangen-Voss.

Sweden By Rail

SJ Train Tickets

experience Sweden's comprehensive rail network

With frequent departures from cities such as Stockholm, Göteborg, Malmö and Karlstad, as well as, easy connections to Denmark via Copenhagen, SJ train tickets are an ideal way to travel around Sweden. Especially thanks to its many modern, comfortable and high speed train services.

Samtrafiken

travel on public transport throughout Sweden

Arlanda Express, popular for its fast airport service between Stockholm City and Arlanda Airport, Öresundståg, Veolia and SJ are just a few of the many operators providing public transport in Sweden. Samtrafiken tickets allow easy access to smaller popular destinations such as Kalmar, Karlskrona, Helsingborg and Lund by rail and bus, with the convenience of a single ticket.





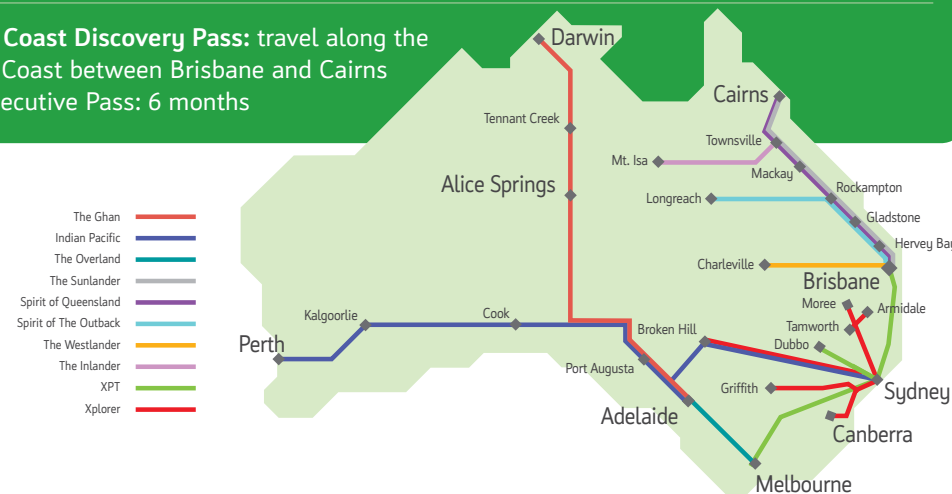
Australia by Rail

Rail Explorer Pass: travel aboard Australia's famous rail journeys: The Ghan, Indian Pacific and The Overland
Consecutive Pass: 3 or 6 months

Queensland Explorer Pass: travel aboard Australia's Queensland Rail network: Spirit of Queensland, The Sunlander, Spirit of the Outback, The Westlander and The Inlander.
Consecutive Pass: 3 or 6 months

New! Discovery Pass: travel to more than 365 destinations across New South Wales, Victoria, Queensland and the Australian Capital Territory by train and coach
Consecutive Pass: 14 days or 1, 3 or 6 months

East Coast Discovery Pass: travel along the East Coast between Brisbane and Cairns
Consecutive Pass: 6 months



Known for its stunning settings, from the red sands of the Outback to the blue waters of the East Coast, Australia has many great rail journeys to choose from. And with select rail passes allowing a whopping 6 months of unlimited rail travel...the options are endless!



Japan rail travel is highly popular thanks to its Shinkansen "bullet trains", where passengers experience high speed travel, while enjoying the convenience of frequent, clean and comfortable service.

Japan by Rail

Japan East Pass: travel throughout Eastern Japan, conveniently offered as e-tickets
Flexi Pass: 5 days within 14 days.

Kyushu Rail Pass: travel throughout your choice of the full Kyushu island or just the Northern Kyushu area, conveniently offered as e-tickets
Consecutive Pass: 3 or 5 days (full Kyushu island)/ 3 or 5 days (Northern Kyushu area)

Japan Rail Pass: travel throughout Japan
Consecutive Pass: 7, 14 or 21 days



China

Beijing - Shanghai - Beijing

Experience the excellent standards of high speed trains en route from Beijing to Shanghai, and vice versa. With approximately 26 daily trains in each direction, passengers can choose to depart as early as 7am and as late as 6pm. Sleeper trains are also available, offering 3 evening departures in both directions; a great option for those who wish to cover a large distance while saving the cost of a night's hotel.

Day Travel & Sleeper Routes

From	To	Travel Time
Beijing	Shanghai	4h 48m
Shanghai	Beijing	4h 48m

* travel times are approximate and may vary.

New! Canada

Travel on daytime services courtesy of Canada's national rail provider VIA Rail

With fast and convenient intercity services, discover Canadian cities, such as Toronto - Ottawa - Montreal - Quebec City, along the popular Ontario-Quebec Corridor and across other famous routes such as the Canadian, the Ocean and more.

USA

America's national rail network, Amtrak, serves over 500 stations in 46 states on a 22,000 mile route network.

USA Rail Pass: travel throughout the USA, with a selected number of travel segments. A travel segment is any time you get on and then get off a vehicle (train, bus, ferry or other allowable leg).

Flexi Pass: 8 segments over 15-days, 12 segments over 30-days, 18 segments over 45-days

Perfect Complements

In addition to our extensive range of rail passes and train tickets we can make your holiday complete with these popular attractions, sightseeing passes tours and more!

Attractions

EDF London Eye, Historic Royal Palaces, Kew Gardens, London Dungen, Shakespeare Houses, Beatles Story, Royal Yacht Britannia, Batobus Paris, Madame Tussauds London

Sightseeing Passes

London Pass, National Trust of Scotland Discover Ticket, Dublin Pass, York Pass, Gothenburg Card

Airport Transport

Heathrow Express now conveniently offered as e-tickets, Gatwick Express, Stansted Express, Birmingham Airport Transfer, Manchester Airport Transfer, Luton Airport Transfer, CAT City Airport Train Vienna

Tours

City Sightseeing, City Cruises, Bateaux London

City Transport

Oyster Card, London Visitor Travel Card

Ferries

Irish Sea Crossing